

Dante Domain Manager

Hyper-V Installation Instructions

v1.4

26th Feb 2024

Copyright

© 2024 Audinate Pty Ltd All Rights Reserved.

Audinate®, the Audinate logo and Dante® are registered trademarks of Audinate Pty Ltd.

All other trademarks are the property of their respective owners.

Audinate products are protected by one or more of US Patents 7747725, 8005939, 7978696, 8171152 and other patents pending or issued. See www.audinate.com/patents.

Legal Notice and Disclaimer

Audinate retains ownership of all intellectual property in this document.

The information and materials presented in this document are provided as an information source only. While effort has been made to ensure the accuracy and completeness of the information, no guarantee is given nor responsibility taken by Audinate for errors or omissions in the data.

Audinate is not liable for any loss or damage that may be suffered or incurred in any way as a result of acting on information in this document. The information is provided solely on the basis that readers will be responsible for making their own assessment, and are advised to verify all relevant representation, statements and information with their own professional advisers.

Software Licensing Notice

Audinate distributes products which are covered by Audinate license agreements and third-party license agreements.

For further information and to access copies of each of these licenses, please visit our website:

www.audinate.com/software-licensing-notice

Contacts

Audinate Pty Ltd

Level 7/64 Kippax Street

Surry Hills NSW 2010

AUSTRALIA

Tel. +61 2 8090 1000

info@audinate.com

www.audinate.com

Audinate Inc

4380 S Macadam Avenue

Suite 255

Portland, OR 97239

USA

Tel: +1 503 224 2998

European Office

Audinate Ltd

Future Business Centre

Kings Hedges Rd

Cambridge CB4 2HY

United Kingdom

Tel. +44 (0) 1273 921695

Asia Pacific Office

Audinate Limited

Suite 1106-08, 11/F Tai Yau Building

No 181 Johnston Road

Wanchai, Hong Kong

澳迪耐特有限公司

香港灣仔莊士敦道181號

大有大廈11樓1106-8室

Tel. +(852)-3588 0030

+(852)-3588 0031

Fax. +(852)-2975 8042

Contents

1. Installation Instructions for Hyper-V	5
1.1. Overview	5
1.2. System Requirements for Hypervisors.....	5
1.3. Enabling Hyper-V in Windows Server	5
1.4. Enabling Hyper-V in Windows 10.....	6
1.5. Creating a DDM Virtual Machine in Hyper-V	7

1. Installation Instructions for Hyper-V

1.1. Overview

Dante Domain Manager (DDM) is packaged as an ISO file, which includes a streamlined Linux distribution which has been preconfigured for the DDM application.

To install DDM you can create a bootable USB drive (for installing DDM on a bare-metal machine) or import the ISO directly into a virtualization platform. This guide will walk through importing the ISO file and creating a virtual machine in Hyper-V.

1.2. System Requirements for Hypervisors

The licensing model for DDM includes three editions: Silver, Gold, and Platinum. Each edition supports a different number of devices and domains, and the hypervisor must be configured to provide sufficient system resources for the virtual machine based on the product edition.

- The Silver and Gold editions require a minimum of 2 CPUs, 20GB disk space and 4GB of RAM.
- The Platinum edition requires a minimum of 2 CPUs, 20GB disk space and 8GB of RAM.
- For systems that include more than 200 devices, 16GB of RAM is recommended.

The physical host machine on which the hypervisor is installed must also meet the above specifications and Hyper-V system requirements: [Windows Server](#) or [Windows 10](#) (with additional capacity for the OS and any other applications).



Important Note: Audinate recommends installing DDM software on server grade hardware. Installing DDM onto personal computer hardware running an OS (Windows, MacOS, Linux) may not be suitable for a production environment or permanent installation.

1.3. Enabling Hyper-V in Windows Server

1. In the **Server Manager Window** click **Manage** then **Add Roles and Features**.
2. On the Installation Type page of the Add Roles and Features Wizard select *Role-based or feature-based installation* then click **Next**.
3. On the **Server Selection** page select the server you wish to add Hyper-V to.
4. On the **Server Roles** page select **Hyper-V**. In the window that pop-ups click **Add Features** then click **Next**.
5. On the **Features** page don't make any changes and click **Next**.
6. On the **Confirmation** page click **Install**.
7. On the **Results** page wait for the Installation to complete and then click **Close**.


1.4. Enabling Hyper-V in Windows 10

Not recommended for production environments or permanent install.

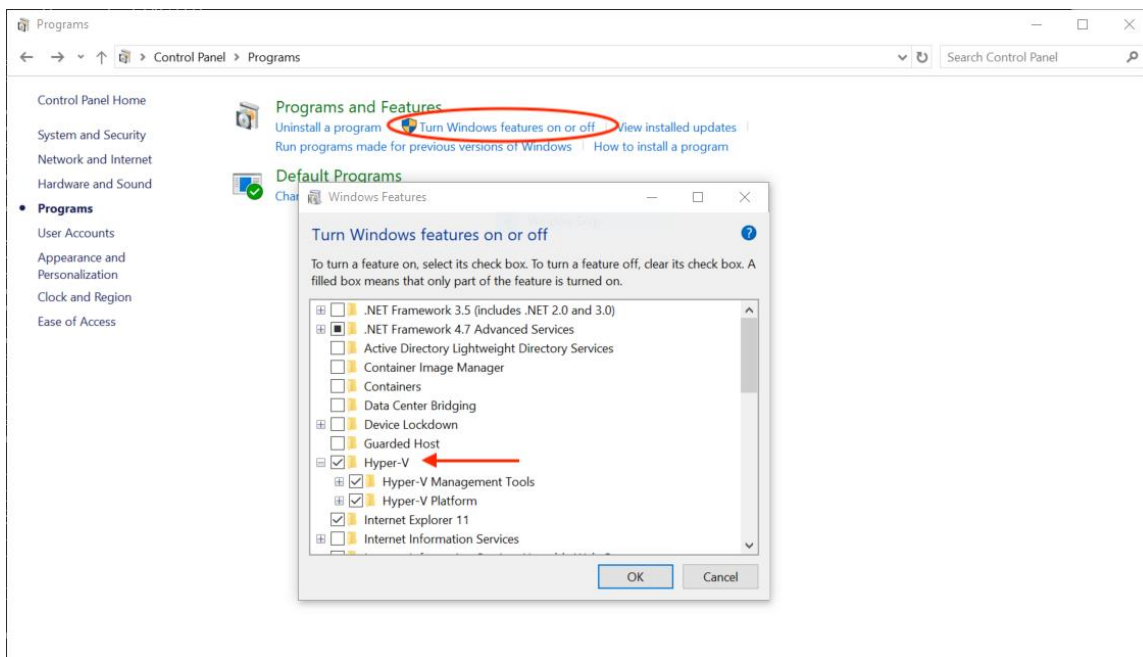
If Hyper-V is not already enabled on your Windows 10 machine, the following steps explain how to enable Hyper-V. If you already have Hyper-V enabled or are installing on a Hyper-V server skip to the next section.

Hyper-V Requirements

- Windows 10 Enterprise, Pro, or Education
- 64-bit Processor with Second Level Address Translation (SLAT)
- CPU support for VM Monitor Mode Extension (VT-c on Intel CPUs)
- Minimum 4 GB memory

 **Note:** Hyper-V **cannot** be installed on Windows 10 Home and you will need more than 4GB memory total to successfully run DDM on a Windows machine.

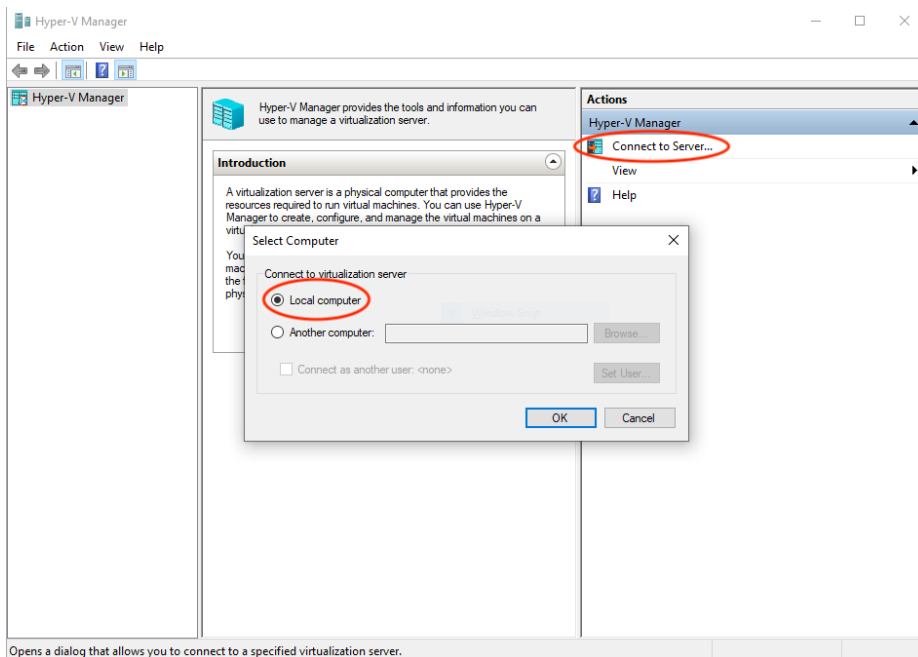
8. Right click on the Windows button and select 'Apps and Features'.
9. Select **Programs and Features** on the right under related settings.
10. Select **Turn Windows Features on or off**.
11. Select **Hyper-V** and click **OK**.
12. When the installation has completed you will be prompted to restart your computer.



Steps 3 and 4, Turn Windows Features on or off and Select Hyper-V

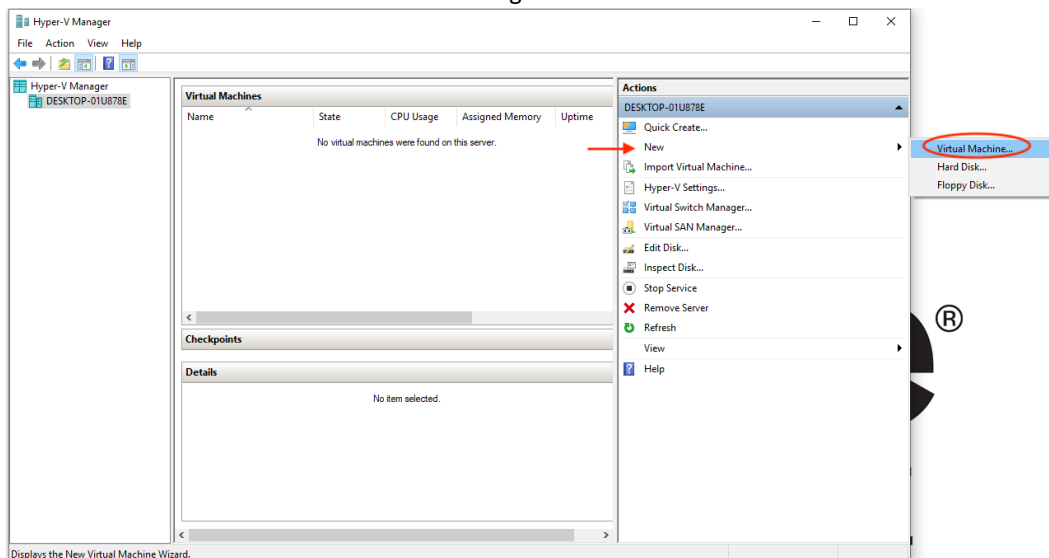
1.5. Creating a DDM Virtual Machine in Hyper-V

1. Launch Hyper-V Manager (not Hyper-V Quick Create).
2. In Hyper-V Manager click **Connect to Server...** from the right column.
3. In the window that pops up select **Local computer** (if you are installing DDM on the local machine). Then click **OK**.



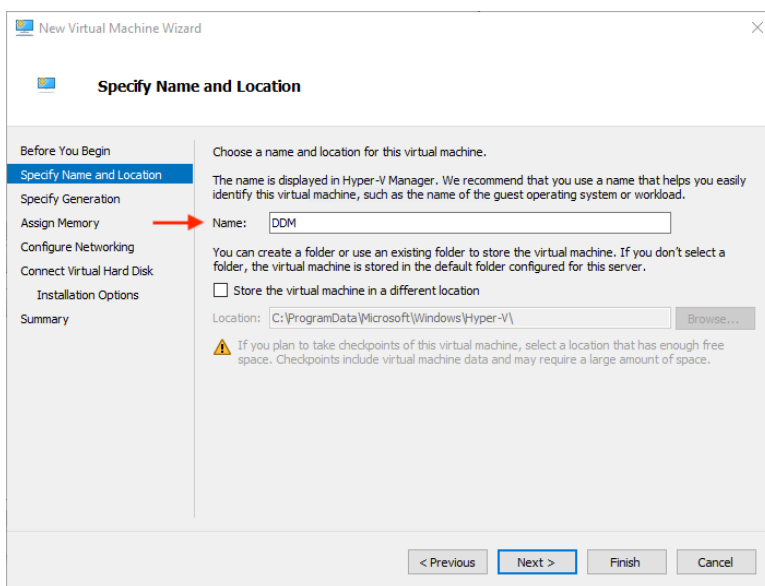
Opens a dialog that allows you to connect to a specified virtualization server.

4. Select **New** then **Virtual Machine...** from the right hand column

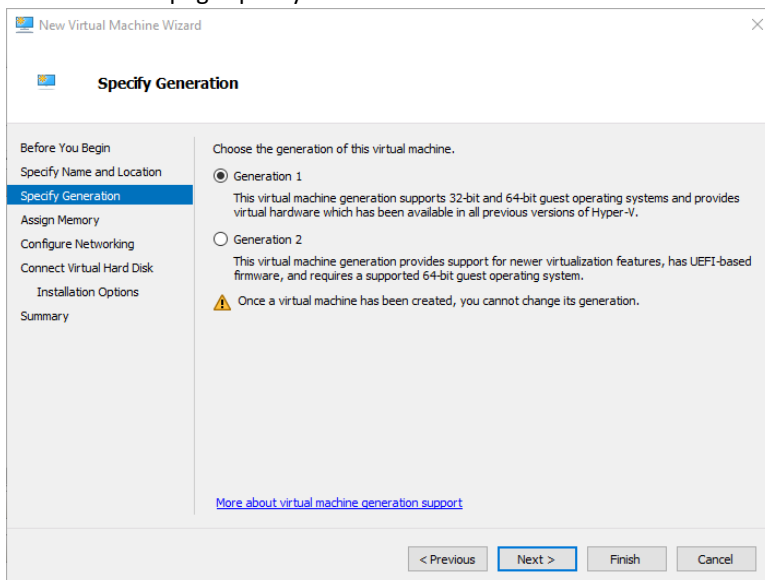


Displays the New Virtual Machine Wizard.

5. The New Virtual Machine Wizard window will open. On the first page give your virtual machine a **Name** and click **Next**.



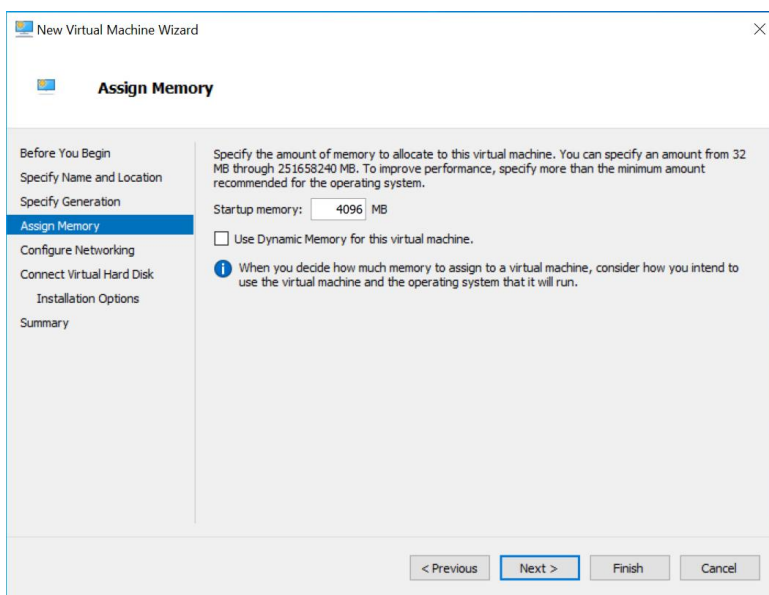
6. On the second page specify **Generation 1** and click **Next**.



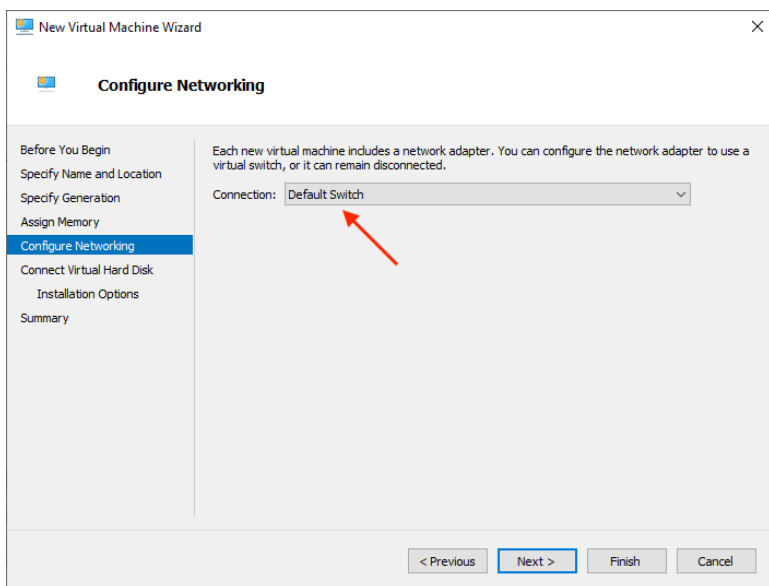
7. On the third page assign the appropriate memory based on the DDM edition and number of devices. (see "1.2 System Requirements for Hypervisors" Minimum: 4096 MB)

Static memory is recommended. Uncheck the 'Use dynamic memory for this virtual machine'.

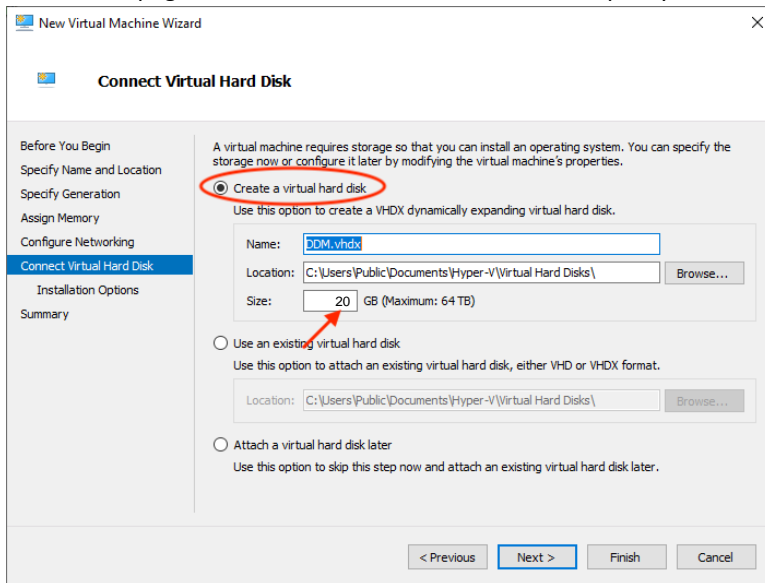
Then click **Next**.



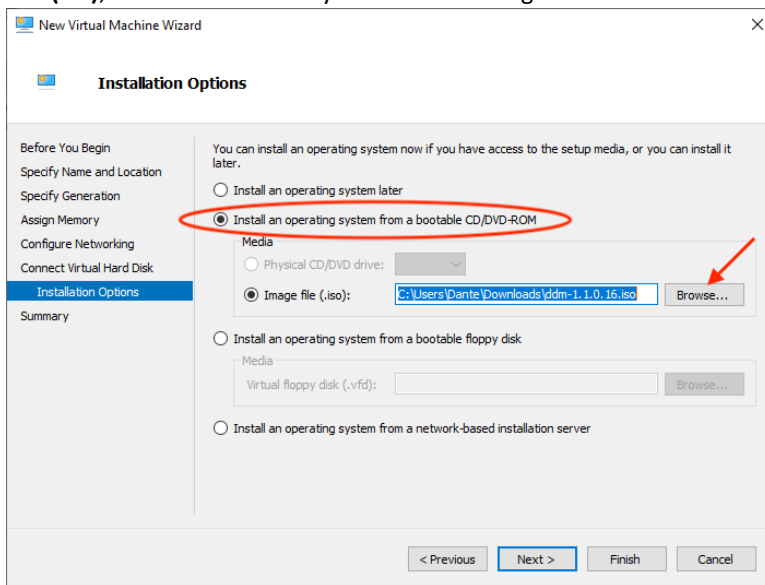
8. On the fourth page select **Default Switch** from the drop-down menu then click **Next**. (*Note: If you connect to your Dante network or the Internet with a non-built-in network adapter you may need to add that interface in the **Virtual Switch Manager** then edit your DDM virtual machine **Settings** to add the new Virtual Switch.*)



- 9. On the fifth page select **Create a virtual hard disk** and specify **Size** then click **Next**. (Minimum: 20 GB)

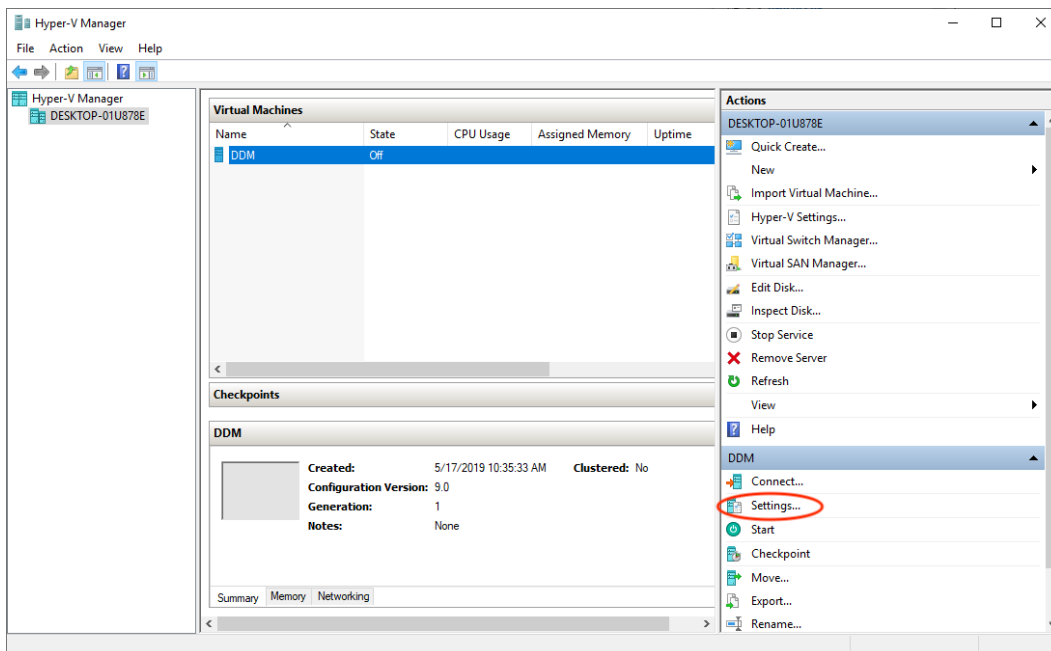


- 10. On the sixth page select **Install an operating system from a bootable CD/DVD-ROM** then select **Image File (iso)**, **Browse...** to locate your DDM ISO image then click **Next**.

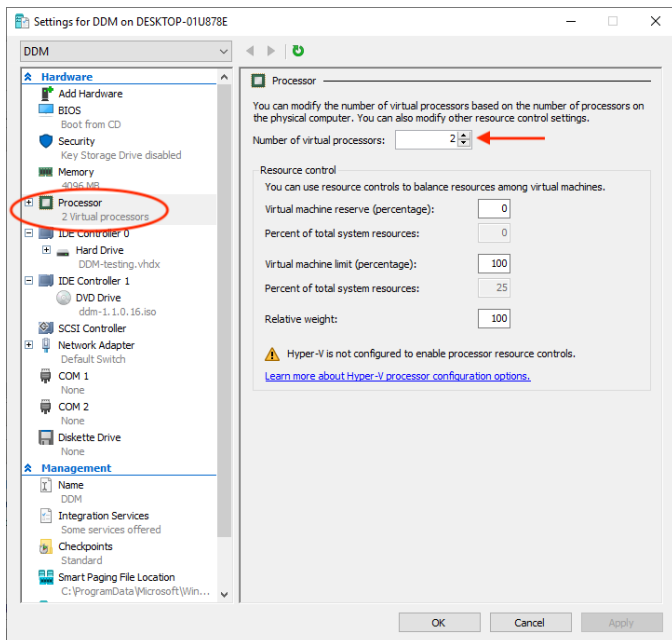


- 11. Review your setup on the Summary page then click **Finish**.

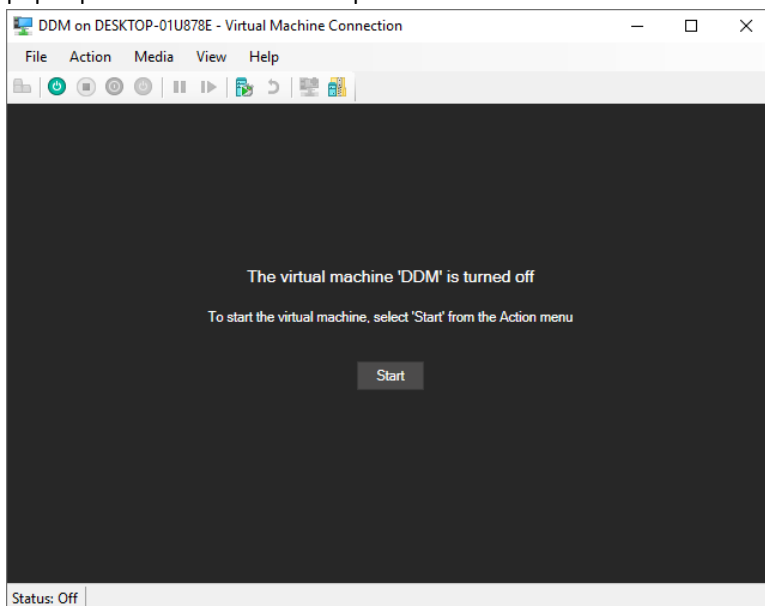
- With your DDM Virtual Machine selected in the Virtual Machines list click **Settings...** in the right-hand column.



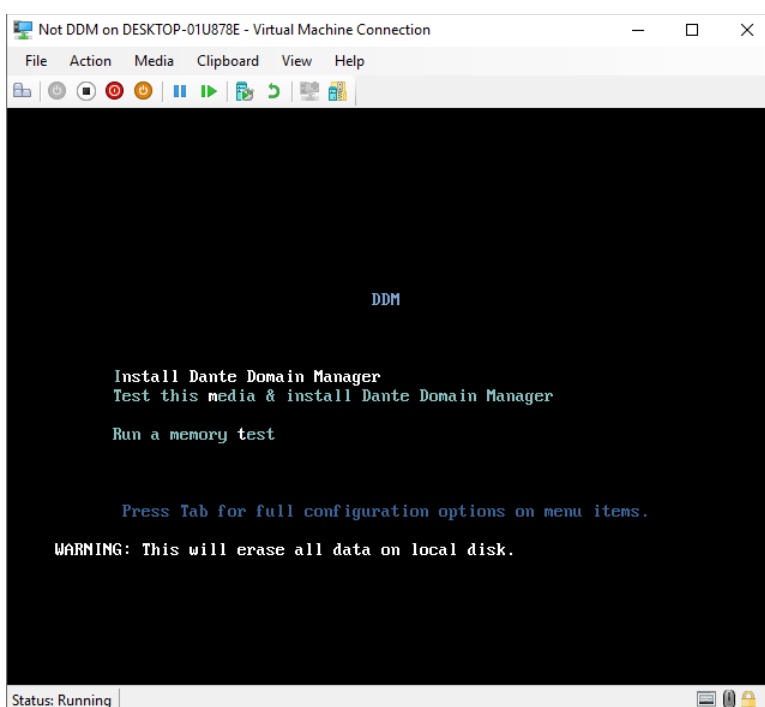
- In the Settings window click **Processor** in the left-hand column and specify **Number of virtual processors** based on the DDM edition and number of devices. (Minimum: 2) Click **Apply** then **OK** to close the Settings window.



- 14. Now click **Connect...** to launch the Virtual Machine console and click **Start** in the console window that pops up to start the installation process.

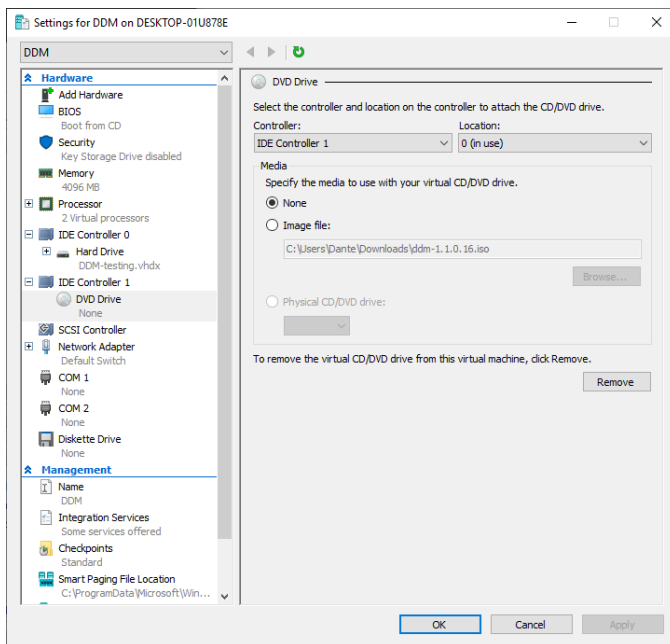


- 15. On the DDM Installation screen make sure **Install Dante Domain Manager** is highlighted and hit enter.



- 16. Let the installation process run until you see the message: **Installation Complete**. Rather than press return to quit (as suggested on screen) click the **Shut Down** button so you don't end up in an install loop.

17. Go the Virtual Machine's **Settings** window again this time click on **DVD Drive** and change the selection to **None**, click Apply then **OK**.



18. Click **Start** to boot up the virtual machine.
19. Once booted up the start-up script displays a dialog showing the Dante interface and the IP address for the VM, plus an administration menu. Make any changes needed in the administration menu, open up a web browser and navigate to the IP address, then follow the steps to complete DDM setup and licensing.
20. More information on the Administration Menu options and licensing process is available in the [Dante Domain Manager Quick Start Guide](#).