

Dante™



ULX-D™ Digital Wireless

ULX-D System Features

Uncompromising Digital Wireless Audio

- 24-bit/48 kHz transparent audio
- Wide variety of trusted Shure Microphones

Extremely Efficient and Reliable RF

- Dramatically increased number of compatible channels per TV channel
- Rock-solid RF signal over the entire range

Scalable, Intelligent Hardware

- Three receiver form factors for all installation sizes – single, dual, quad
- Simplified setup and operation

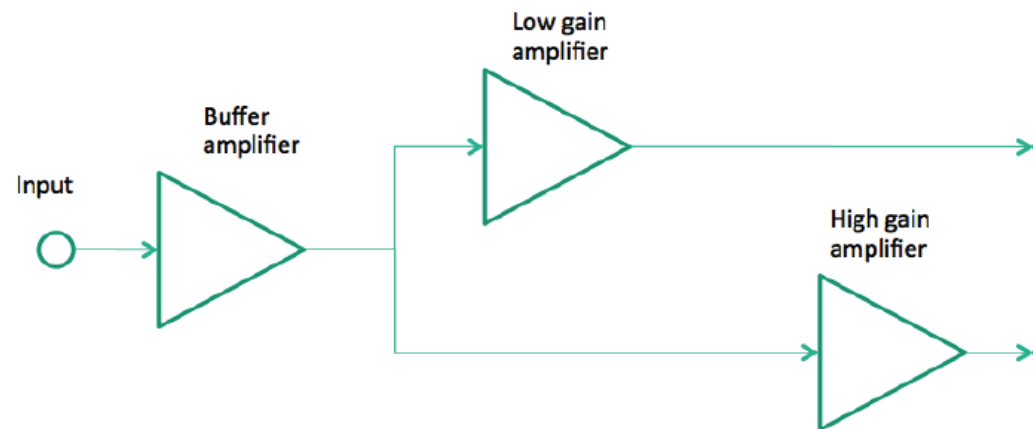
Shure Advanced Power Management

- SB900 Li-Ion Rechargeable Battery + Charger Options
- Extended run times and accurate metering of life and health stats

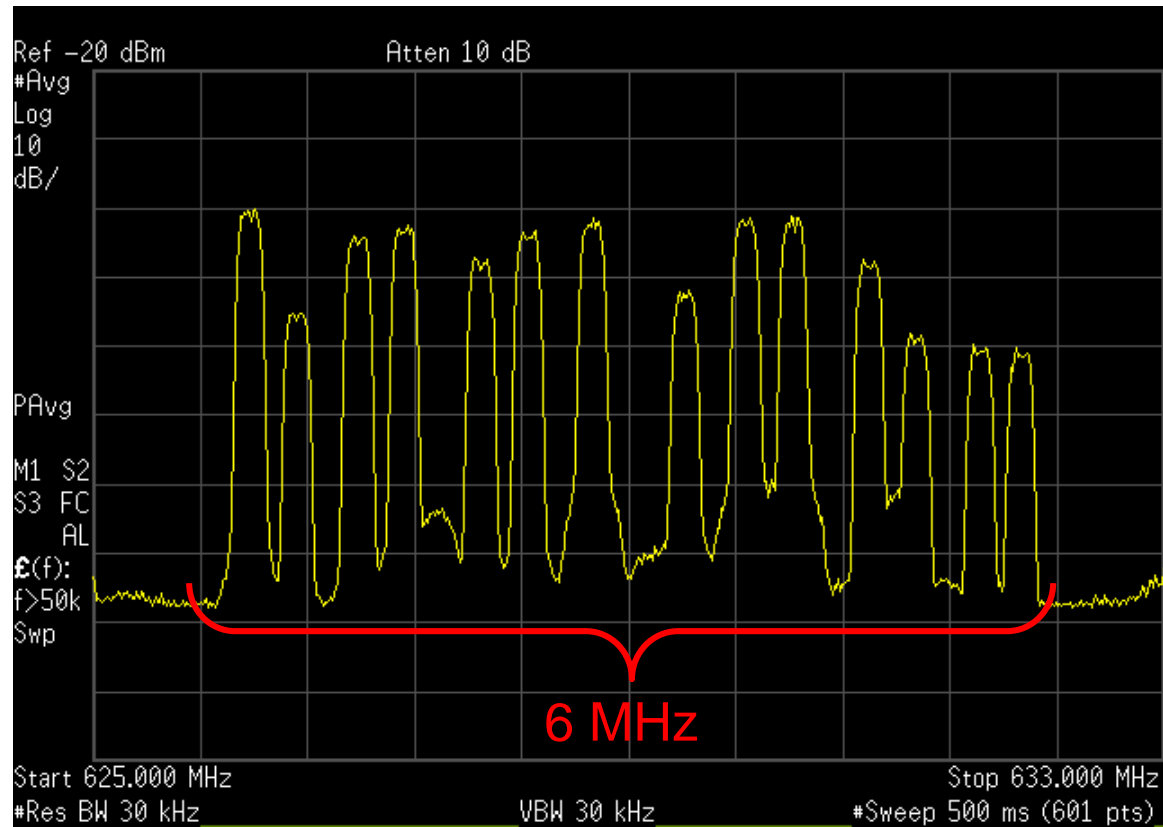
Intelligent Hardware

Proprietary Shure Gain Ranging

- Optimizes system's dynamic range for ANY input source
 - System: >120dB dynamic range for system
 - Transmitter input sensitivity optimized automatically
- Allows user to adjust system gain mid-show using only *receiver* controls
 - ELIMINATES need for Tx adjustments
 - 60 dB system gain range available at Receiver



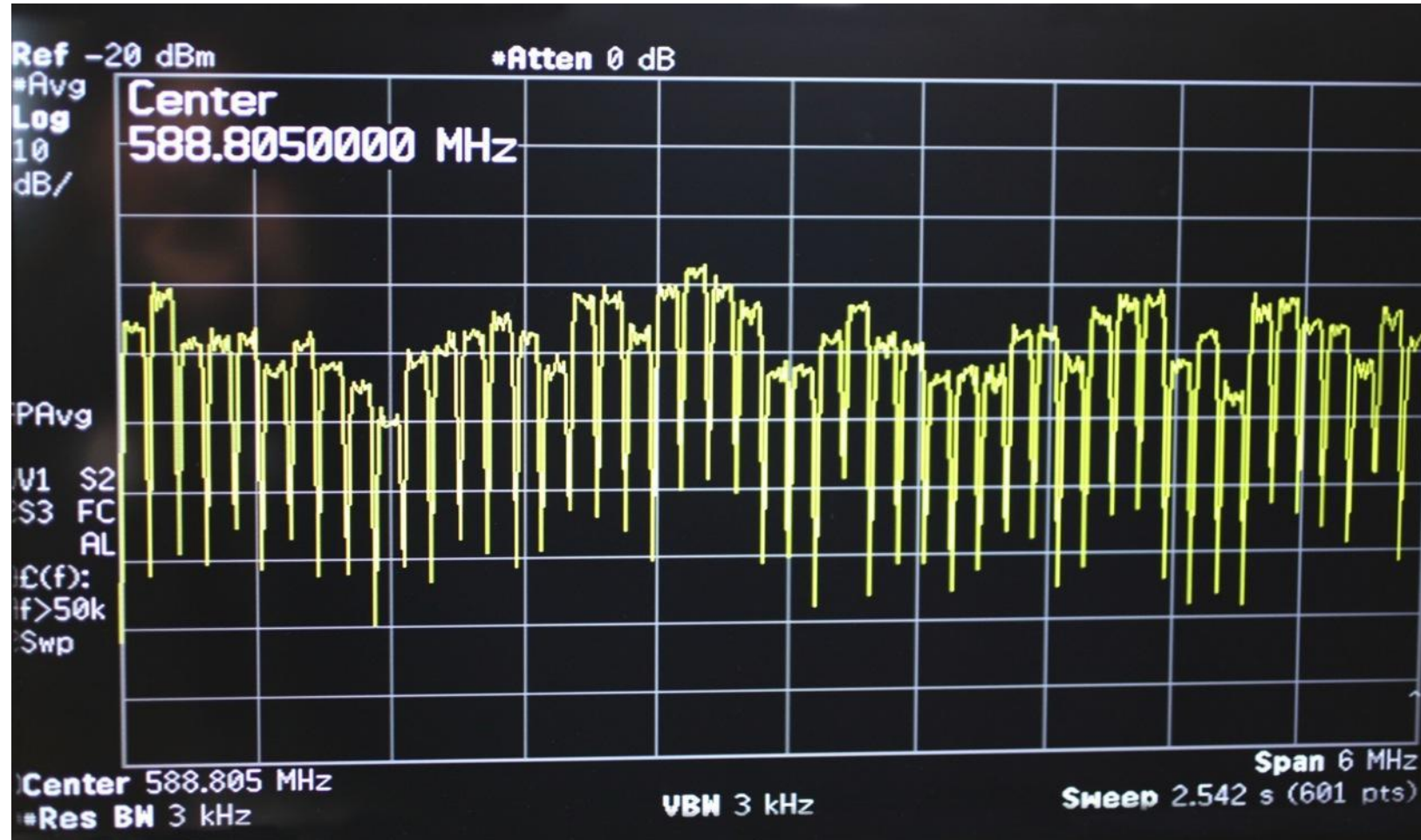
14 ULX-D Transmitters in 6 MHz



Intermods are -55 dBc, essentially in the noise floor

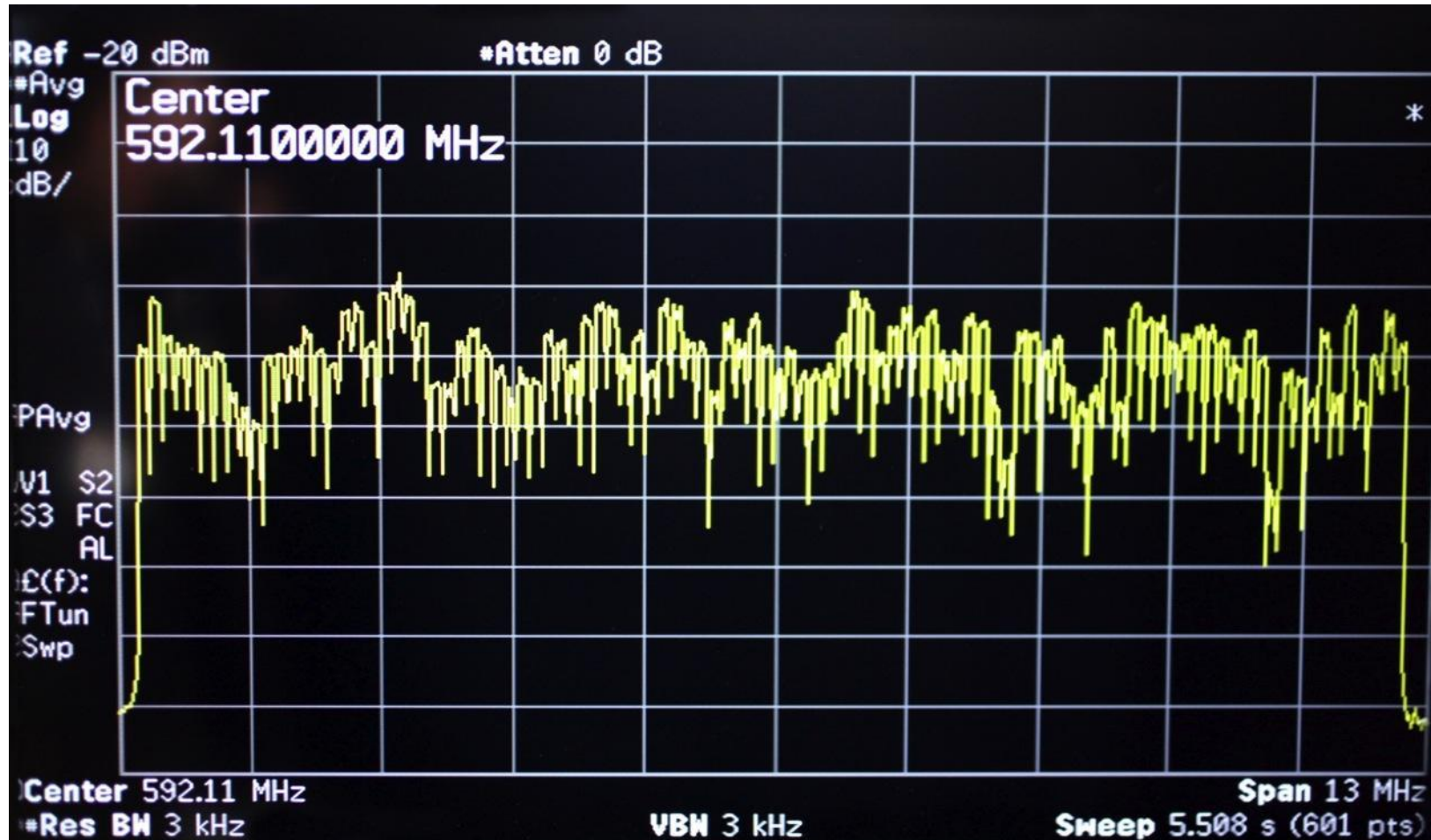
Spectrum Analyzer Screen

(2 ft. distance, 47 channels in 6 MHz)



Spectrum Analyzer Screen

(2 ft. distance, 100 channels in <13 MHz)

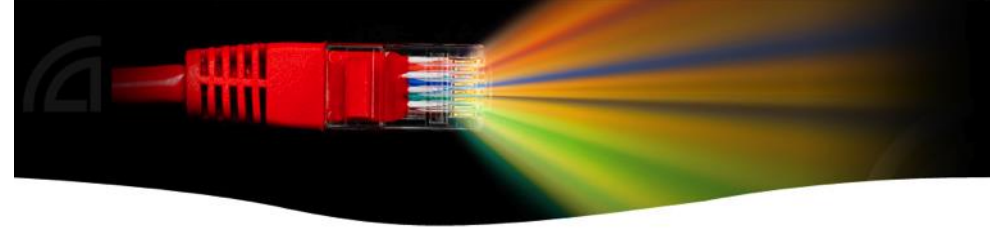


ULXD4D Dual-channel Receiver

ULXD4Q Quad-channel Receiver



- Same features as ULXD single, plus:
 - Dante Digital Audio Networking
 - Internal power supply
 - RF Cascade
 - Audio Summing
 - Frequency Diversity (bodypack only)



- 1024 bi-directional channels of uncompressed audio over Ethernet
 - 24-bit/48 kHz, with Gigabit switch
- Low latency; plug-and-play
- Works on shared networks

Transmitter Options

- ULXD1 Bodypack or ULXD2 Handheld
- ***Metal construction***
- Selectable RF output power
 - 1, 10, and 20 mW
- 5 segment battery fuel gauge
- Extended battery life:
 - Up to 11 hours continuous use with 2x AA alkaline batteries (*included*)
 - Over 12 hours with Shure lithium-ion rechargeable battery pack (*not included*)
- External charging contacts for docked charging
- Backlit LCD
- Frequency and power lockout
- Field-Replaceable Bodypack Antenna



ULXD2 Handheld Transmitter



ENTERPRISE SCALE MICROPHONE SOLUTIONS

FOR MANAGED AV ENVIRONMENTS



URE[®]
NCE™

Microflex™ Wireless System Component Overview



MXW System Setup

Additional options for DANTE



MXW-APT
4 or 8- Channel
Access
Point

PoE > 6.5W



SCM820 *IntelliMix*[®] Automatic Mixer



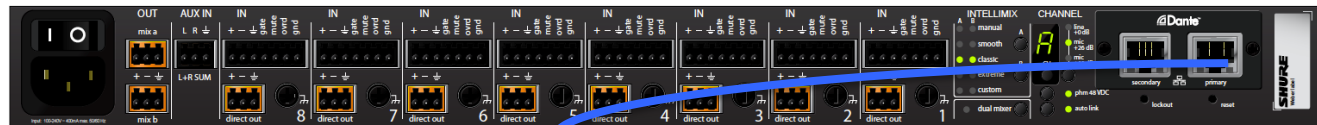
- ***IntelliMix*[®] Modes:** Classic, Smooth, Extreme, Manual, Custom
- **Dual Mixer:** Route any or all channels to two independent *IntelliMix*[®] output busses. Operate two *IntelliMix*[™] modes simultaneously.
- **MaxBus:** 1 talker, 1 microphone. Always avoids comb filtering/phasing
- **Customizable:** NAT, NOMA, LMLO, NOM and more!
- **Shure GUI:** Web-browser GUI for remote monitoring, configuration, and control.

8 Channels of Audio - Dante

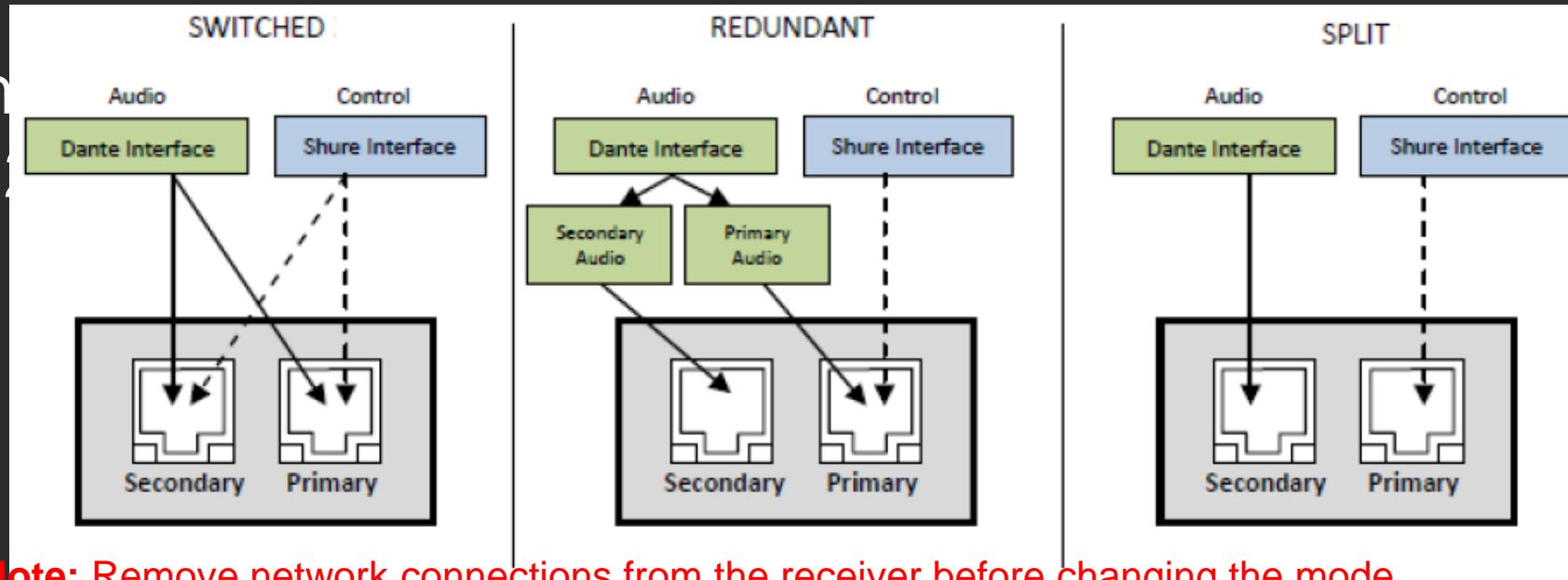


Scenarios:

- 8 channels of ULXD to 8 inputs on SCM820
 - SCM820 Mix A to single input on LS9
- or
- 8 channels of ULXD to 8 inputs on LS9
 - SCM820 connected as Insert to Yamaha



- Ethernet offers



Note: Remove network connections from the receiver before changing the mode.

Network Mode	Port Function		Application
	Secondary	Primary	
Switched (default)	Shure Control Dante Audio and Controller	Shure Control Dante Audio and Controller	Typical installations of star or daisy-chained networks.
Redundant Audio	Dante Redundant Audio	Shure Control Dante Audio and Controller	Create a backup audio network.
Split	Dante Audio and Controller	Shure Control	Isolate Dante and Shure Control networks