

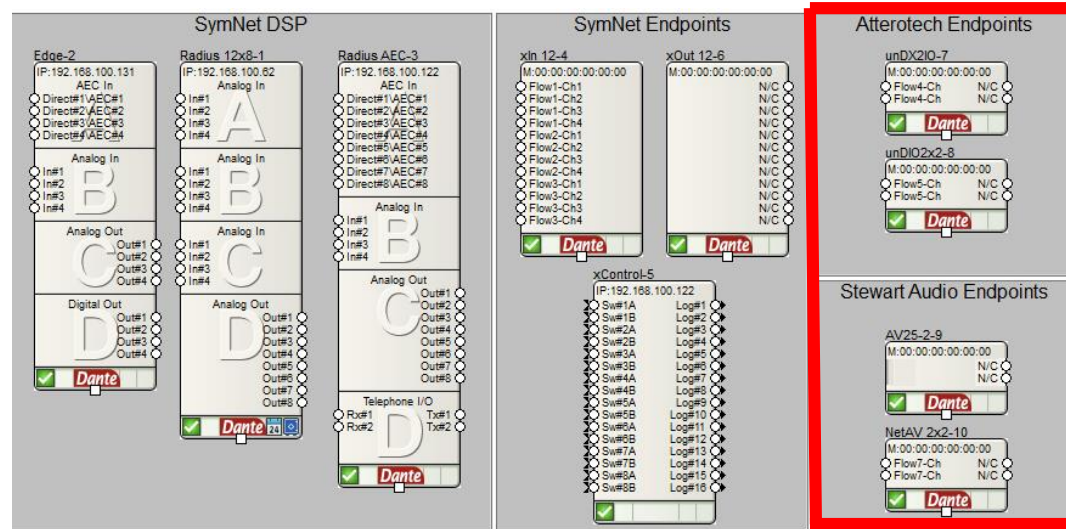


SymNet Composer  
Evolving DSP software to include Third Party Dante  
devices

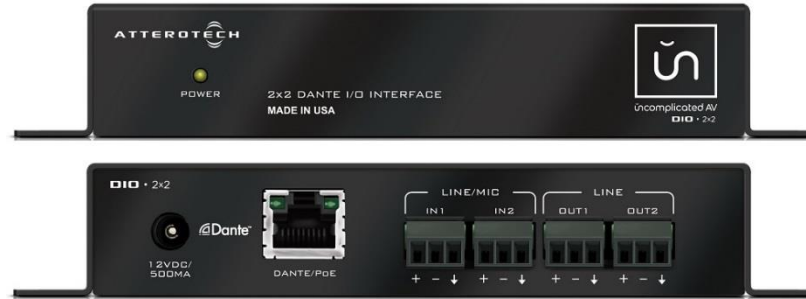
September, 2015  
Audinate AVNW  
Tim Murray, Symetrix

## Support for Atterotech and Stewart Audio, Dante enabled endpoints.

- Program and manage Dante enabled Atterotech (unDIO2x2 and unDX2IO) and Stewart Audio (AV25-2 and NetAV 2x2) endpoint devices directly from Composer 2.0. These 3<sup>rd</sup> party devices are programmed and controlled the same way as other SymNet hardware, such as the SymNet xIn 12 and xOut 12.

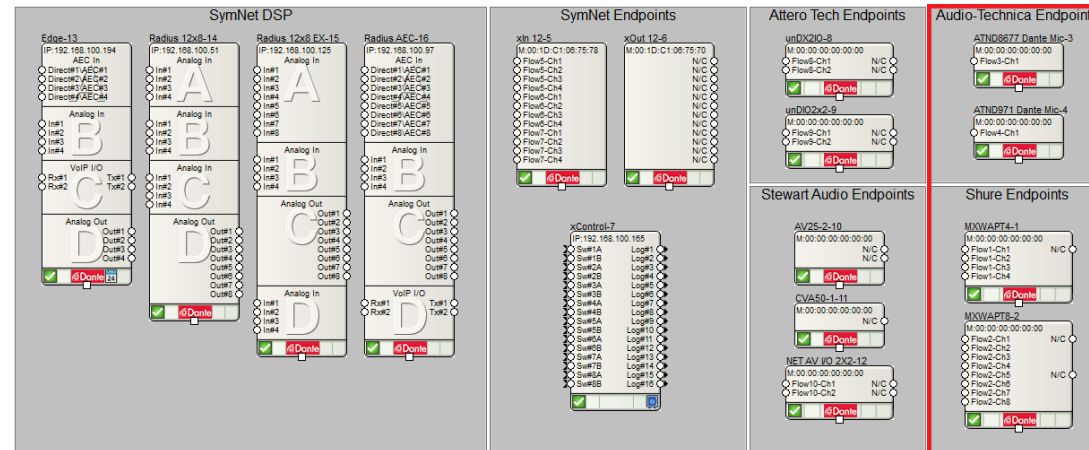


Support for AtteroTech and Stewart Audio, Dante enabled endpoints.



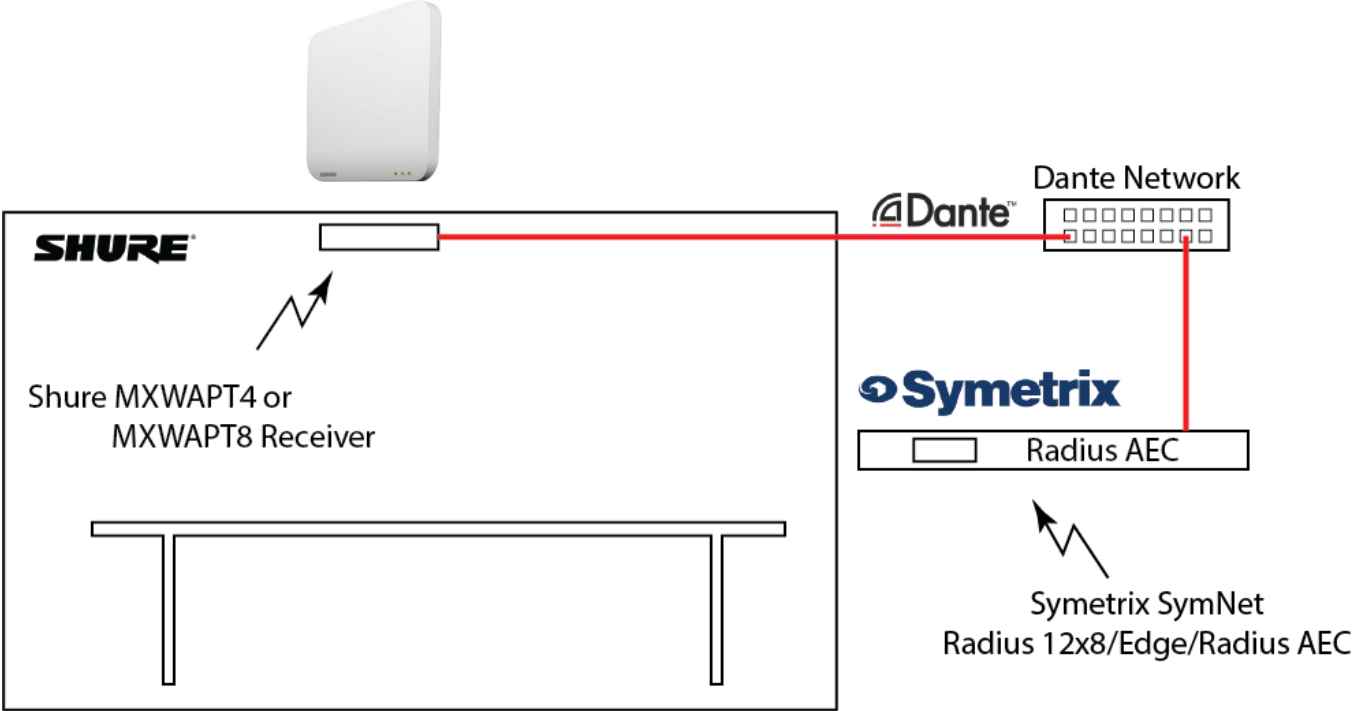
# Support for Audio-Technica and Shure Dante-Enabled Devices

- Program and manage Dante enabled Audio-Technica (ATND8677 and ATND971) and Shure (MXWAPT4 and MXWAPT8) endpoint devices directly from SymNet Composer 3.0
  - These 3<sup>rd</sup> party devices are programmed and controlled the same way as other SymNet hardware, such as the SymNet xIn 12 and xOut 12





# Support for Shure Microflex Wireless Receivers





## Support for Shure Microflex Wireless Transmitters



MXW1 Hybrid Bodypack Transmitter



MXW2 Handheld Transmitter



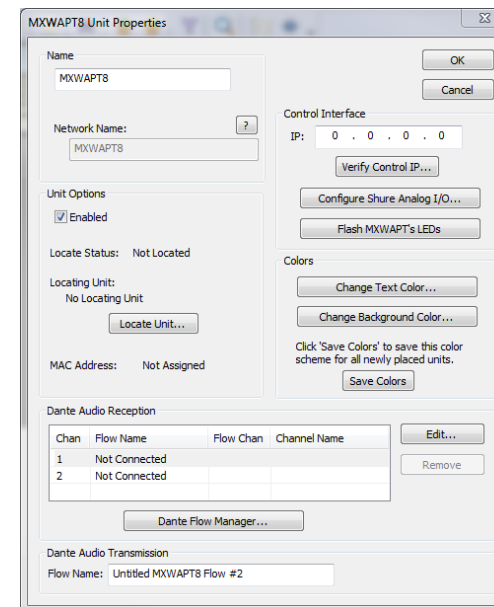
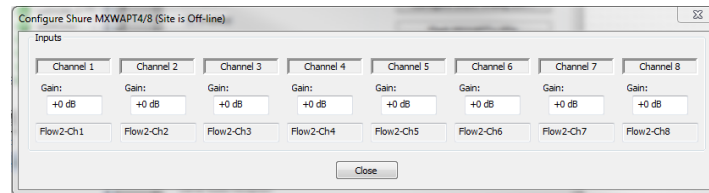
MXW6 Boundary Transmitter



MXW8 Gooseneck Base Transmitter

# Support for Audio-Technica and Shure Dante-Enabled Devices

- Use SymNet Composer 3.0 to control Shure MXWAPT4 and MXWAPT8 gain, mute, Flash LED's and signal routing



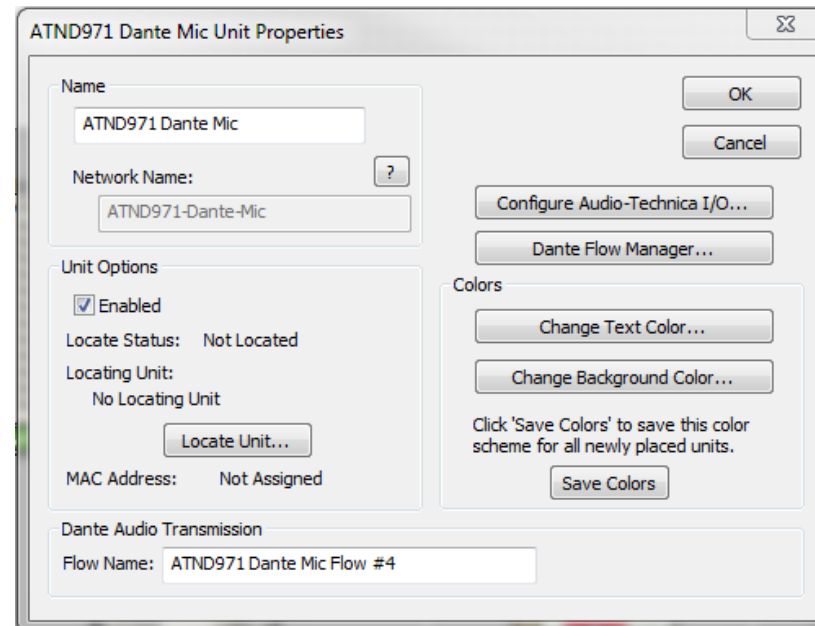
## Support for ATND971 Cardioid Condenser Boundary Microphone and ATND8677 Desk Stand with Dante™ Network Output





# Support for Audio-Technica and Shure Dante-Enabled Devices

- Use SymNet Composer 3.0 to control Audio-Technica ATND8677 and ATND971 gain, mute, phantom power, low cut and signal routing
- Controlling third-party Dante end points from SymNet Composer simplifies the integration and commissioning process
  - Reduces troubleshooting time



## Attero Tech unDUSB

- Easily integrate desktop conferencing apps such as Skype, Lync, or multi-channel recording/playback apps.
- 2x2 channel USB audio-to-Dante interface.
- Network discovery, unit identification and Dante routing directly from Composer.
- Plug and Play driverless operation with Mac OS X and Windows operating systems.
- PoE or local power for always on and ready operation.



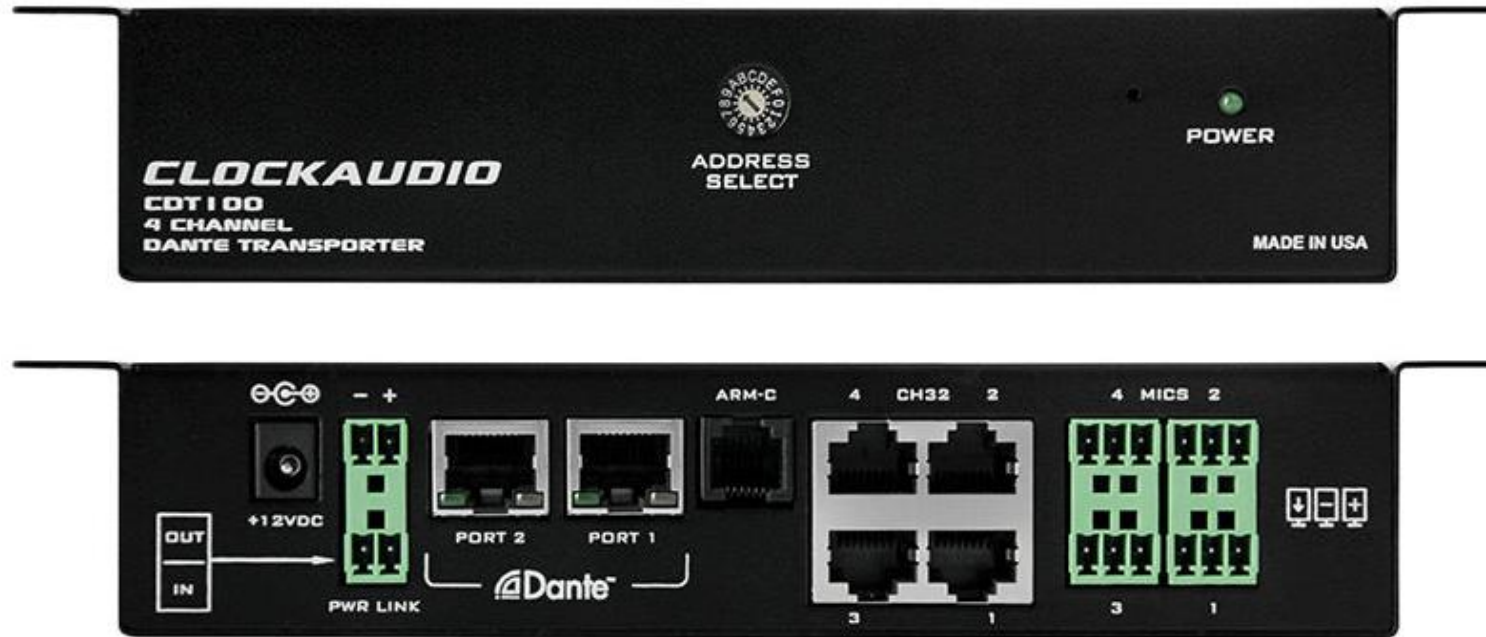
# CLOCKAUDIO®

PROFESSIONAL MICROPHONE SYSTEMS



- Easy to install with under table mounting
- Audio and control signals transported over Dante
- 4 audio inputs, multiple units may be daisy chained (maximum of 6 units on a single CAT-5)

# Key Features



- Provides Phantom Power (+48v) for each mic input
- 4 control inputs compatible with all CLOCKAUDIO devices including:
  - direct connection to CH32 Litetouch switch & LED, TS001, Retracta CRM202S-RF, CS-S Series, SM80S, S80S
  - direct connection to ARM-C controller
- Open API for interfacing with Control Systems
- Compatible with any Dante capable audio DSP

