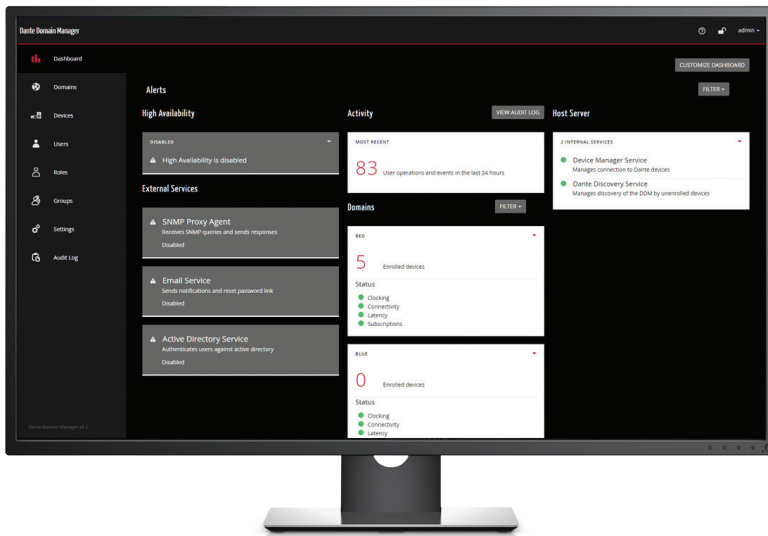


Dante Domain Manager™



New Features in v1.1

- ▶ **SMPTTE 2110** support for standards compliant stream configuration and management between Dante devices and 3rd party devices in your network
- ▶ **GPS Synchronization** allows robust clocking management between remote sites, regardless of distance
- ▶ **Standard ISO package** now supports a wide range of virtualization platforms including VMWare, Hyper-V and VirtualBox, as well as "bare metal" servers

A complete management solution for Dante AV networks

Dante Domain Manager makes Dante AV networking more secure, more scalable and more manageable.

Reduce errors and complexity by partitioning a single network into separate, individually managed domains of AV devices to match rooms, buildings or functions.

Provide security by defining user authentication for each domain using your existing Active Directory or LDAP setup.

Security and Control

Dante Domain Manager provides granular control over user access, secure web-based administration, and support for user authentication via Active Directory and LDAP. User roles and domain-level permissions allow total control over who can and can't access your

Flexibility and Scalability

Dante Domain Manager lets you expand Dante networks beyond the limitations of network subnets, and is ideal for large and/or complex network topologies such as those found in schools and universities, commercial and corporate environments, transport hubs and leisure facilities. Support for fully routed IP networks means that Dante can work over existing network topologies without the need for dedicated VLANs, and is free from the device count limitations of subnets. Dante Domains may span multiple subnets, liberating your AV system organization from network constraints. Dante Domain Manager v1.1 introduces SMPTTE 2110 interoperability for compatible Dante devices, allowing Dante products to be seamlessly

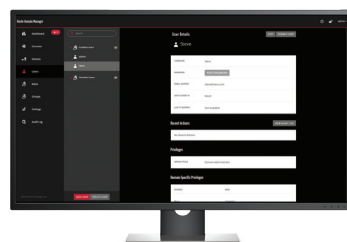
Monitor your network with a robust, web-based dashboard and configurable alerts via email and SNMP.

Expand system scope by allowing Dante to scale across multiple network subnets to encompass multiple rooms, buildings and more.

NEW Enable SMPTTE 2110 protocols to seamlessly integrate Dante devices in multi-vendor production environments.

Dante network, with out-of-the-box support for system administrators, domain administrators, device operators and view-only 'guests'. Users authenticate via the familiar Dante Controller interface for minimal disruption of workflows in a secure environment.

integrated into multi-vendor production environments. With Dante Domain Manager, even the largest deployments can be seamlessly connected as one single, synchronized AV system, with low-latency, software-controlled audio connectivity across the entire site.

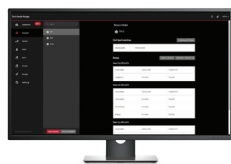


Features

- ▶ **Powerful User Administration:** User roles and Active Directory / LDAP support enables secure authentication and control over user access.
- ▶ **Routed Network Support:** Create AV device groupings that fit your operational requirements, regardless of network infrastructure.
- ▶ **Searchable Audit Log:** A fully searchable, time-stamped audit log enables detailed event auditing and reporting.
- ▶ **Configurable Dynamic Dashboard:** Intuitive, graphical dashboard widgets provide real-time visibility of system health and status metrics, including clocking and subscription status, service status and configuration change alerts.
- ▶ **Secure Encrypted Administration and Device Configuration:** HTTPS support and encrypted control traffic ensures fully secure communication between the DDM server, the DDM web interface and the Dante network.
- ▶ **Responsive web-based UI:** Access Dante Domain Manager from any desktop or tablet web browser, with drag & drop for quick and easy grouping of devices into domains
- ▶ **Remote Monitoring:** SNMP support provides system visibility from anywhere at any time.
- ▶ **Automatic Discovery:** Dante Domain Manager supports device / server discovery across both routed and standalone networks.

Visibility and Accountability

Instantly see the status of your Dante system and your Dante users in real-time. The Dante Domain Manager dashboard is a



dynamic real-time display of system status and performance metrics, including security and device alerts, domain status, service status and host server performance. Each user can

fully configure the layout and contents of their own personal dashboard to suit their specific monitoring requirements.

A dedicated Audit Log lets you keep track of all user activities in a searchable, time-stamped list that includes detailed event monitoring and auditing so you can track down issues and errors without guesswork.



Multiple Licensing Options

Dante Domain Manager is available in three editions: Silver, Gold and Platinum.

Silver

The Silver edition includes user authentication and control, domain creation and management, device administration, cross-subnet audio routing, user-defined dashboards, role administration, system, user and device alerts, HTTPS, and a detailed and fully searchable audit log. The Silver edition supports a maximum of 2 domains and 10 audio devices, making it ideal for smaller installations such as houses of worship and schools.

Gold

The Gold edition includes all the Silver features, plus enhanced event and alert filtering and LDAP

/ Active Directory integration, and supports a maximum of 10 domains and 50 devices, making it suitable for installations such as mid-sized business environments which require management of conference rooms and public spaces.

Platinum

The Platinum edition includes all the Silver features, plus SNMP support and a fully-redundant high availability feature for mission-critical systems. The Platinum edition supports up to 50 domains and up to 250 devices, enabling comprehensive control over larger systems such as campus-wide installations with many rooms, users and devices spread over a wide area.

Feature Matrix

| Feature | Silver | Gold | Platinum |
|---|--------|------|----------|
| Create and manage domains | ✓ | ✓ | ✓ |
| Configure domains across subnets | ✓ | ✓ | ✓ |
| Dashboards and alerts | ✓ | ✓ | ✓ |
| Detailed audit Log | ✓ | ✓ | ✓ |
| Automatic discovery of Dante devices | ✓ | ✓ | ✓ |
| Responsive browser interface | ✓ | ✓ | ✓ |
| User definition and role management | ✓ | ✓ | ✓ |
| Virtual server support | ✓ | ✓ | ✓ |
| System backup and restore | ✓ | ✓ | ✓ |
| Secure, encrypted control traffic | ✓ | ✓ | ✓ |
| Route audio between Dante domains | ✓ | ✓ | ✓ |
| Support for SMPTE 2110/AES67 compatible devices | ✓ | ✓ | ✓ |
| GPS Synchronization | ✓ | ✓ | ✓ |
| Email alerts | ✓ | ✓ | ✓ |
| Enhanced event and alert filtering | ✗ | ✓ | ✓ |
| LDAP and Active Directory integration | ✗ | ✓ | ✓ |
| High Availability redundancy | ✗ | ✗ | ✓ |
| SNMP alerts | ✗ | ✗ | ✓ |

| Domain and Device Support | Silver | Gold | Platinum |
|---------------------------|--------|------|----------|
| Domains supported | 2 | 10 | 50 |
| Devices supported | 10 | 50 | 250 |

* Add additional domain and node capacity with Platinum expansion packs.
Contact us at audinate.com/contact/ddm to learn more.

| Pricing | Silver | Gold | Platinum |
|------------------|--------|---------|----------|
| List price (USD) | \$995 | \$3,995 | \$9,995 |

Note: All information within this document is subject to change without notice.

Features (continued)

- ▶ **Configurable Clocking:** If required, you can specify which of your Dante devices will act as subnet clock masters – or just let Dante Domain Manager handle everything for you.
- ▶ **Backup and Restore:** Your Dante Domain Manager configuration can be saved locally and restored as a new installation
- ▶ **Virtual Server Support:** Run Dante Domain Manager on virtual machines in data centers
- ▶ **High Availability:** Multiple backup server support enables automatic failover in the event of a problem with your main server.

WORLD WIDE OFFICES

Audinate Ltd

Level 1, 458 Wattle St
 Ultimo NSW 2007
 Australia
 Tel: +61 2 8090 1000

Audinate Ltd

Suite 104
 Werks Central
 15-17 Middle St
 Brighton, BN1 1AL
 United Kingdom
 Tel. +44 (0) 1273 921695

Audinate, Inc

1200 NW Naito Parkway
 Suite 630
 Portland, OR 97209
 USA
 Tel. +1.503.224.2998

Audinate Limited

Suite 1106-08, 11/
 F Tai Yau Building
 No 181 Johnston Road
 Wanchai, Hong Kong
 澳迪耐特有限公司
 香港灣仔莊士敦道181號
 大有大廈11樓1106-8室
 Tel. +(852)-3588 0030
 +(852)-3588 0031

info@audinate.com
www.audinate.com

Audinate, Dante and their logotypes are trademarks of Audinate Pty Ltd.

All other trademarks remain the property of their respective owners.

Audinate Products are covered by US Patent No. 7,747,725.
 © 2019 Audinate Ltd. All rights reserved.