



DANTE™ AV NETWORKING WORLD

*info***Comm15**

Conference: June 13-19 | Exhibits: June 17-19
Orange County Convention Center | Orlando, Florida



Willow Creek: A Case Study

Matt Wentz
Willow Creek
Community Church

Willow Creek Community Church

- Started in 1975 in a movie theater
- Moved to a permanent location in 1980
- Started with one building (Lakeside)
- Has grown steadily over the past 35 years to an 810,000 sq ft building
- There are 4 major venues and several small to mid sized classrooms

Original Infrastructure

- All analog
- Copper tie lines
- Analog consoles

The Need for Dante

- Major upgrades/overhauls
- Gear was failing
- Dante seemed the perfect solution
- Yamaha rep conversation
- Creativity

Chapel – 1st Dante Venue

- Failing analog console
- Simple system to jump in to
- Gear installed
- IT network
- Ease of setup



DANTE™ AV NETWORKING WORLD

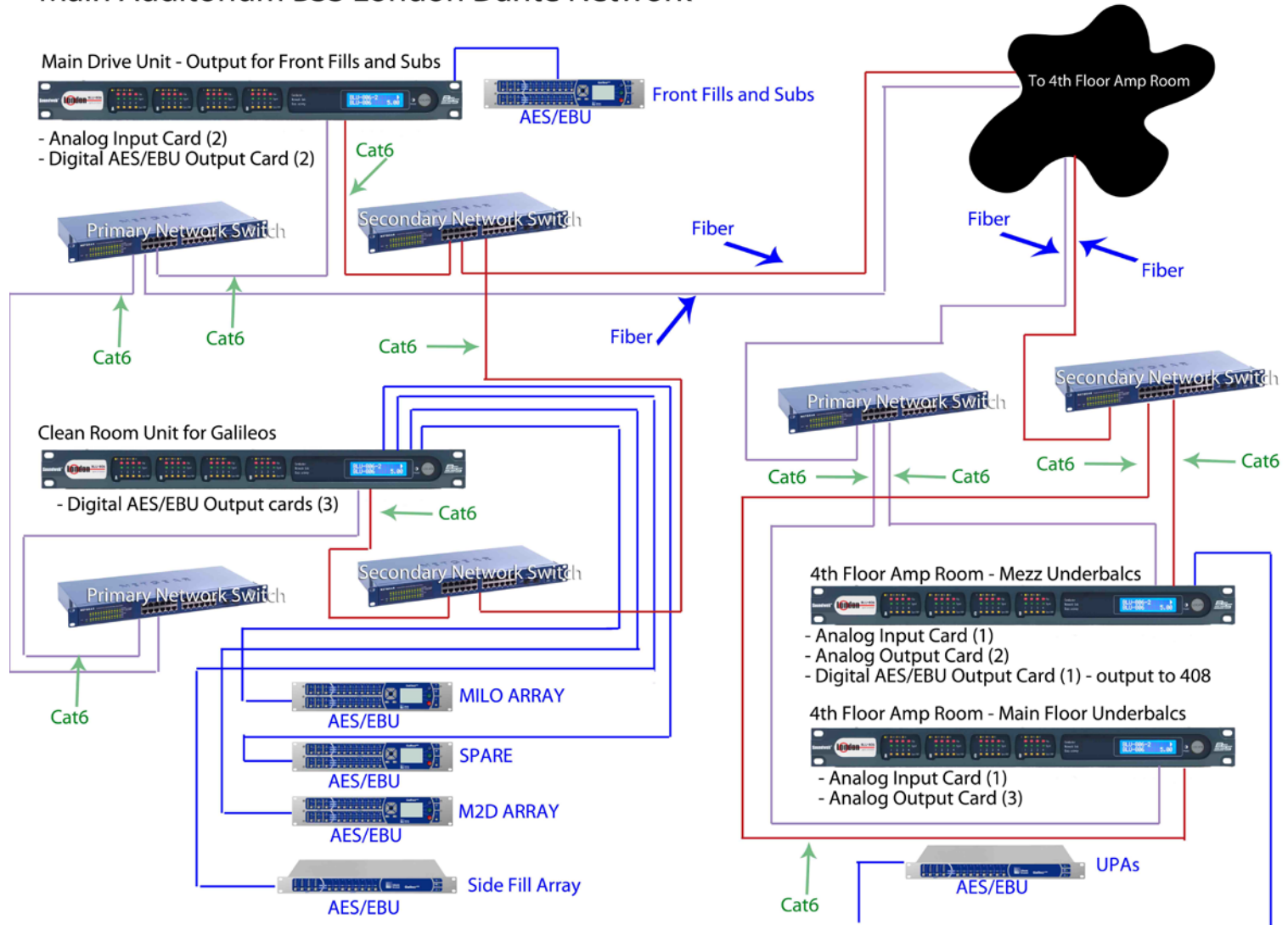
<http://www.audinate.com/resources/> © 2015



Main Aud – 2nd Dante Venue

- PA distribution was failing
- Rock solid solution
- Fiber backbone
- Management - VLAN

Main Auditorium BSS London Dante Network





DANTE™ AV NETWORKING WORLD

<http://www.audinate.com/resources/> © 2015



3rd and 4th venues

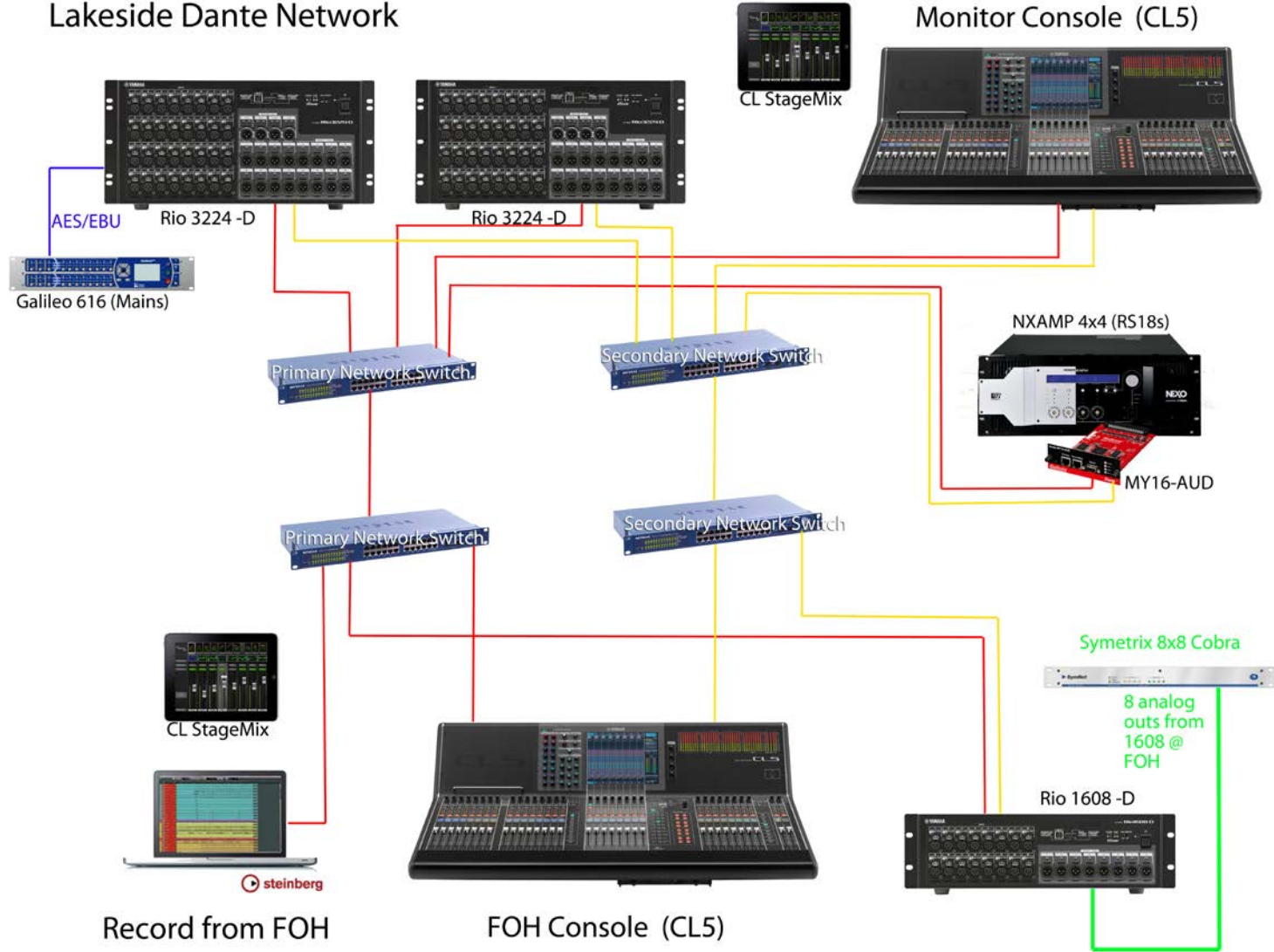
- Lakeside
 - Yamaha M7CL and Whirlwind snakes
- New Dante system



DANTE™ AV NETWORKING WORLD

<http://www.audinate.com/resources/> © 2015

Lakeside Dante Network



Monitor Console (CL5)



8 analog
outs from
1608 @
FOH



Record from FOH

FOH Console (CL5)



DANTE™ AV NETWORKING WORLD

<http://www.audinate.com/resources/> © 2015



3rd and 4th venues

- Lakeside
 - Yamaha M7CL and Whirlwind snakes
 - New Dante system
- Activity Center
 - Yamaha M7CL and no monitor desk
 - New Dante system



DANTE™ AV NETWORKING WORLD

<http://www.audinate.com/resources/> © 2015



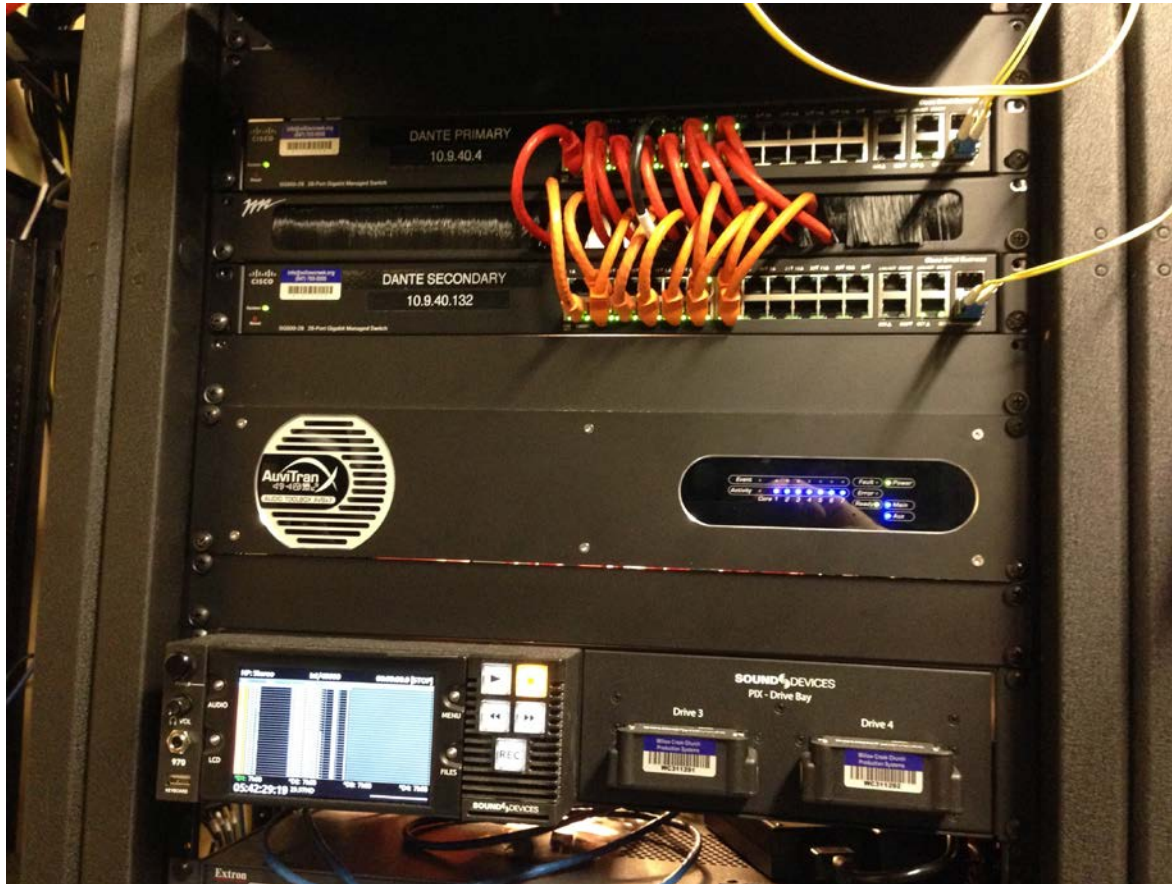
Need to connect the venues

- How do we connect everything?
- Auvitrان AVBx7
- Isolated venues
- Management - VM



DANTE™ AV NETWORKING WORLD

<http://www.audinate.com/resources/> © 2015



Challenges

- QoS and EEE
- Secondary port

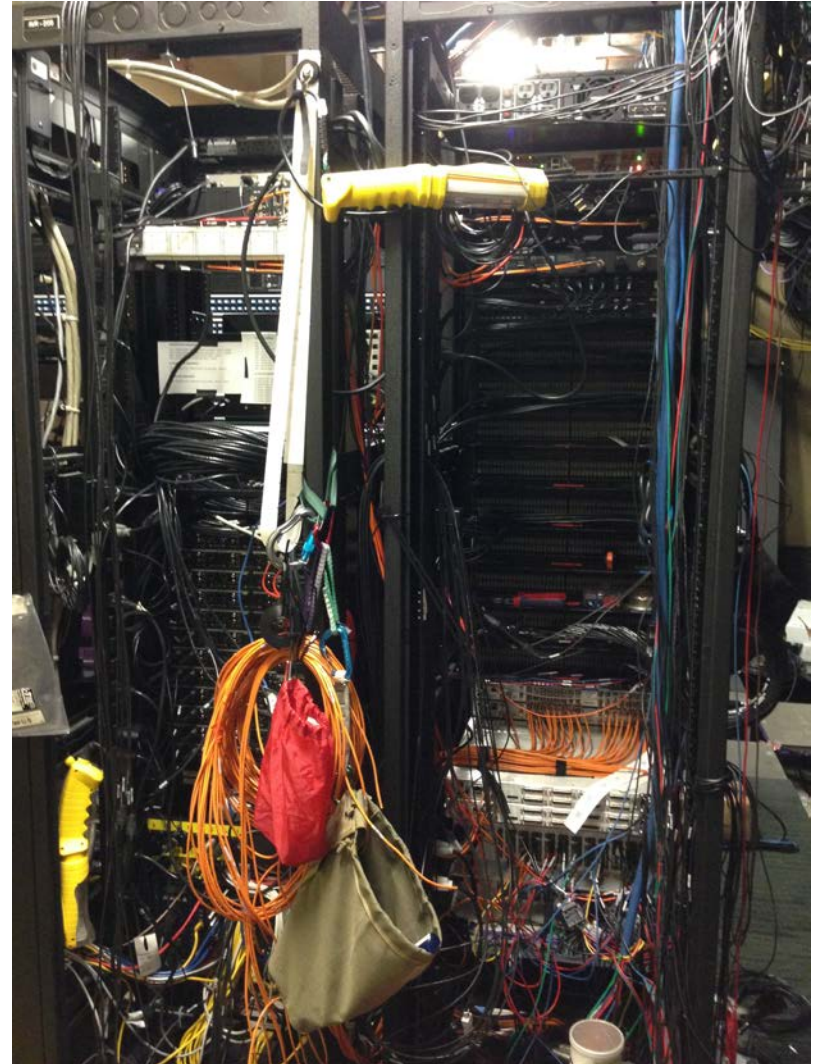
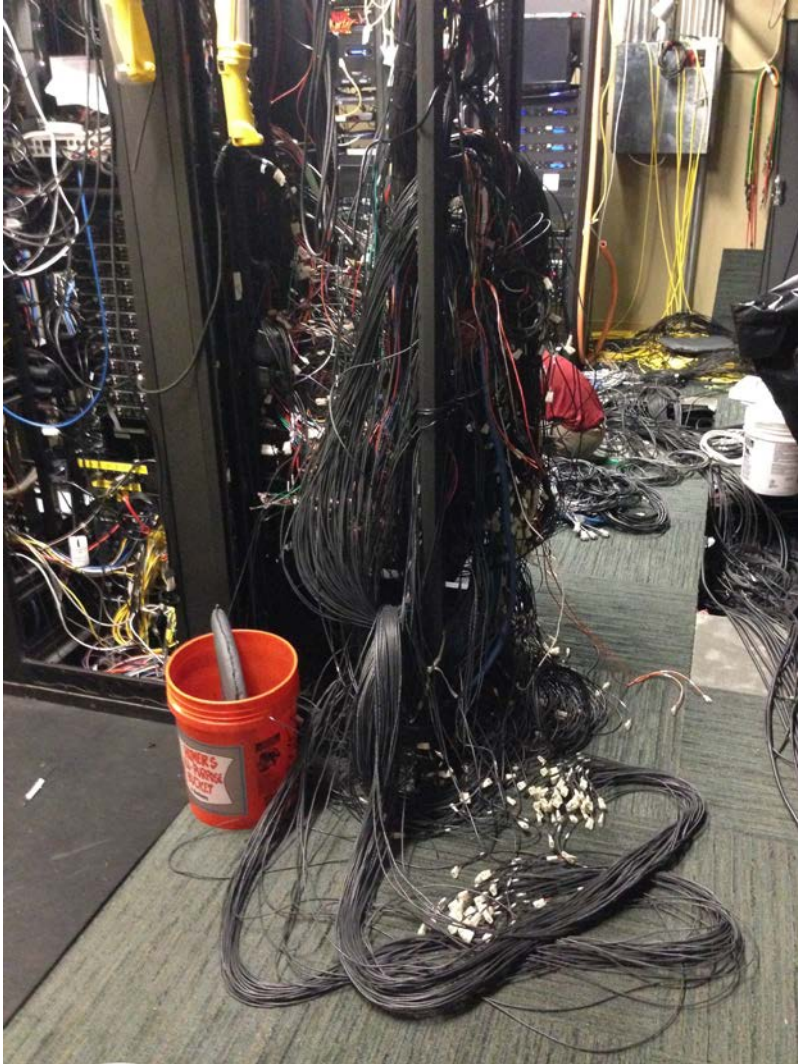
Future

- HD video upgrade
- Interpretation
- Consoles



DANTE™ AV NETWORKING WORLD

<http://www.audinate.com/resources/> © 2015



Conclusion

Matt Wentz - @WentzMatthew
mwentz@willowcreek.org
Willow Creek Community Church



DANTE™ AV NETWORKING WORLD

<http://www.audinate.com/resources/> © 2015